

# TIMAPUU



**FINNISH BARBECUE HUTS •  
SAUNAS • SUMMER HOUSES • TEPEES • SHELTERS**







Atmosphere,

Tradition and Versatility







Let Timapuu complete your garden or courtyard with a stylish and welcoming touch. Timapuu's outbuildings radiate the sense of ambience and craftsmanship that come with traditional timber construction.

Thanks to their versatility, our huts make for a practical and environmentally friendly addition to your outdoor space.

Spend your free time relaxing in a barbecue hut or summerhouse with friends and family, enjoying the glow and warmth of a real fire and great company. Timapuu barbecue huts are also perfect for use as summer kitchens. The heart of the hut, as well as its heat source, is a versatile and easy-to-use grill, perfect for creating delicious meals for groups of all sizes.

Would you like to forget your worries and relax both your body and mind? Then look no further than the gentle heat of the Timapuu sauna hut. Our sauna huts, built honouring the Finnish sauna tradition, make for the perfect outdoor sauna for your garden or cottage.

Lovers of the great outdoors long for nature, and you can grill to your heart's content in Timapuu's barbecue shelters, embracing the call of the great outdoors in your own backyard. On a fishing or hunting trip, a Timapuu shelter offers all-year-round protection from the elements.

Timapuu tepees offer a unique kind of magic; their genuine design offers a taste of a bygone era. Break free from the everyday grind in your very own tepee. Timapuu makes construction a breeze for those who prefer not to build themselves or who simply do not have the time. We supply all our huts ready-to-use on a turnkey basis, complete with a wide range of accessories. All you need to do is lay the foundations.

Our dealers will be happy to provide advice and guidance on which products would be best for you. Timapuu huts are also perfect for commercial use, as well as for all kinds of purposes for schools, daycare centres, parishes and municipalities.



[www.timapuu.fi](http://www.timapuu.fi)





# TIMAPUU

## Timapuu Garden Buildings

A beautiful, atmospheric, and practical garden building completes the look and functionality of your yard. We offer a whole range of sizes that are suitable for all spaces, from eye-catching structures for small courtyards to spacious huts for 40 people.

All of our models are octagonal, except for our largest 10-sided 29 m<sup>2</sup> hut. More sides means more ambience for your hut.

### All our barbecue huts feature:

- low-emissivity windows
- benches that go around the walls, made from 45x195 mm sturdy planks
- mortise door lock
- deadwood door handles
- felt shingle roof
- eaves flashing
- stainless steel door threshold plate
- air vent in the wall

Perfect your hut with your choice of the Barbecue Package or Lapland Package, taking the ambience to the next level.



See our  
accessory packages  
on pages 16-17.  
The hut is also available  
as a basic model  
and with the  
Lapland package.

# Hut 6,9

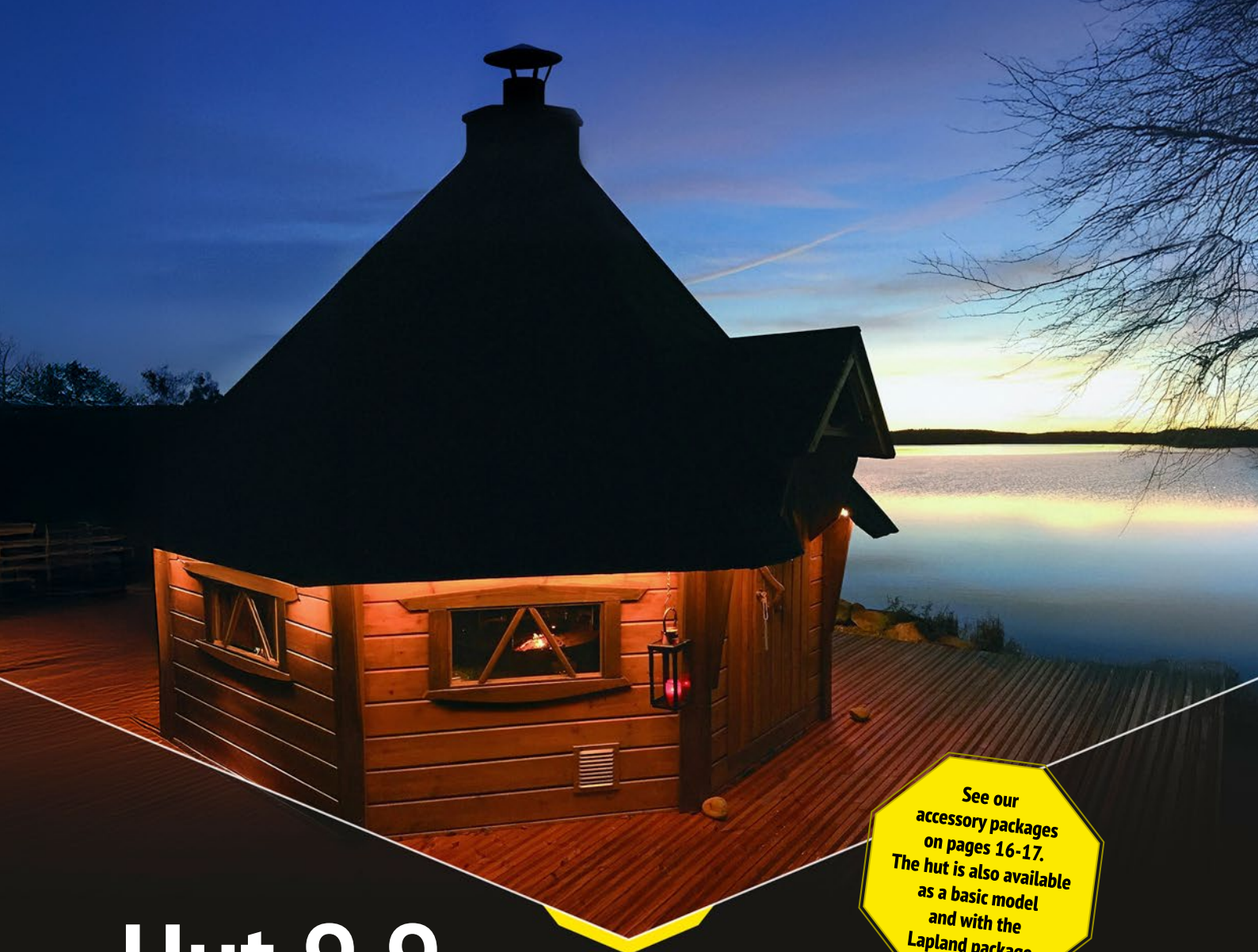
## Perfectly formed

This compact hut is perfect for almost any garden or courtyard. Hut 6,9 is a great choice for courtyards in busier towns and cities. Inside, the hut is surprisingly roomy. The spacious feel compared to the surface area is ensured by the octagonal floor design, with the hut comfortably accommodating up to ten people.

The steep roof and good dimensions mean that the hut does not require a chimney or hood. This ensures plenty of room for all. If desired, the chimney and hood are, of course, available for this model, too.







See our  
accessory packages  
on pages 16-17.  
The hut is also available  
as a basic model  
and with the  
Lapland package.

# Hut 9,9

## Optimal adaptability

This traditional hut design features plenty of room for up to 15 people. The spacious dimensions and wide benches of this hut allow it to be conveniently transformed into a guest room for 2–3 people or, perhaps, even a fisherman's refuge.

As the hut has good circulation and ventilation, it does not require a chimney or hood. This means plenty of room around the barbecue for the master chef to work their magic. If desired, the chimney and hood are, of course, available for this model, too.







# Hut 12,0

## Cook up a great atmosphere amongst friends

**H**ut 12,0 is an airy and spacious hut that is capable of accommodating around 20 people. This hut takes pride of place in wide open outdoor spaces. The hut can be customised with wider benches, which can function as beds for several people when needed, or even a cosy refuge for a group of fishermen, hunters or hikers.

See our  
accessory packages  
on pages 16-17.  
The hut is also available  
as a basic model  
and with the  
Lapland package.







# Hut 17,2

## Cause for celebration

See our  
accessory packages  
on pages 16-17.  
The hut is also available  
as a basic model  
and with the  
Lapland package.

This spacious hut, with plenty of room for 25 people, is perfect for all kinds of occasions. It offers space for storage, leisure, cooking, and sleeping for larger groups. It is also a great venue for family celebrations and evening get-togethers. Thanks to its versatility and size, this hut is a great choice as an outbuilding or even a summer cottage.







See our  
accessory packages  
on pages 16-17.  
The hut is also available  
as a basic model  
and with the  
Lapland package.

# Hut 29,0

## Enough space for a larger group

**H**ut 29,0 is our largest hut, boasting an impressive appearance and spacious interior. The hut can accommodate as many as 40 people, making it perfect for hunting clubs and groups to gather together. On campsites and at outdoor facilities it makes for an excellent leisure and evening space.

This hut can also be equipped with sturdy ready-made table sets with extra benches, providing seating for up to 34 diners.







## Accommodation Huts 12,0 & 17,5

### Ideal for overnight guests

**A**n accommodation hut effortlessly adds exotic accommodation space to a garden, summer cottage or campsite. We have a range of design and accessory options, allowing you to adapt your hut to suit your needs, with possibilities including toilet extensions, loft extensions, double beds, bunk beds or small dining areas.

The wall structure in our accommodation huts is made of high-quality, 70 mm planed timber, offering excellent thermal insulation properties. If you would like to ensure that you can use your hut all-year-round, you can also install electric radiators or even a heating stove. Furthermore, thermal insulation can also be added in the roof. What could be better than to enjoy a great night's sleep than in one of our accommodation huts!





# Summerhouses 9,9 & 12,0 and 17,5



The high walls and large windows of our summerhouses let in the light beautifully, providing a feeling of airiness. The heart of your summer courtyard can also be used to house summer guests, if necessary. Our summerhouses can easily be adapted to suit customers' needs and preferences. For example, a large window element can be replaced with a smaller window or even a plain wall.

## The basic configuration of a summerhouse includes:

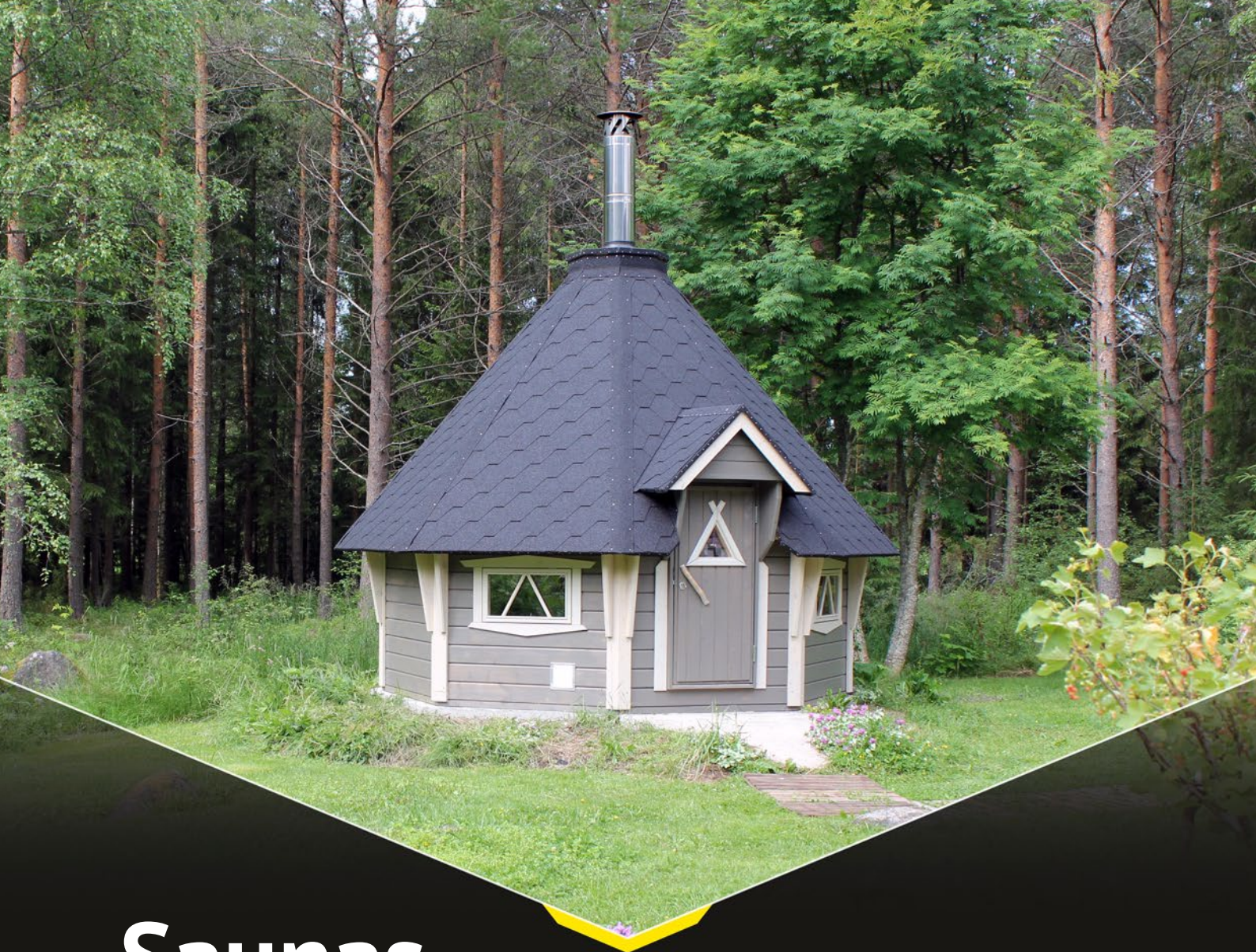
- bronze low-emissivity windows on seven walls (opening windows on one wall)
- encircling benches (depth of 70 cm on the three back walls)

- mortise door lock
- stainless steel door threshold plate
- deadwood door handles
- felt shingle roof
- eaves flashing

If you wish, you can also order beautiful reindeer skins or sheepskins for the summerhouse benches.

**Find out  
more about our  
barbecue packages  
on page 16.**





# Saunas

**For Finns, a sauna is a sacred place.**

A sauna is ideal for relaxation, a place to wash away the stresses and urgencies of everyday life. Timapuu sauna huts allow you to enjoy smooth, even, oxygen-rich sauna steam. Our saunas are inspired by and embrace old Finnish sauna traditions, combined with wellconsidered details to ensure they could not be easier to use.

Both of our sauna models are supplied fully ready to use. Our accessory packages include everything you could need for a rejuvenating sauna experience:

- Harvia Legend 240 sauna heater with Greenflame -glass door. Optionally Harvia Legend PO165 electric sauna heater
- water heater Legend 25 l Black
- stove stones 220 kg
- stylish benches
- insulated chimney
- eaves flashing
- water bucket and ladle
- bench towels and thermometer



# Sauna Hut 9,9

## Sauna lovers' dream

Our sauna hut is both suitable for smaller courtyard spaces whilst still offering plenty of bench space for up to 8–10 people. The sauna heater is positioned in the middle of the sauna, allowing the steam to spread softly and evenly.

The steep roof and dimensions of the sauna are designed to ensure sufficient height for the benches, making sure that you can enjoy the sauna's heat from head to toe.



---

# Scenic Sauna

## Enjoy a sauna with landscape views

Our scenic sauna is designed to make your sauna experience even more enjoyable with the help of the surrounding nature. Few things could be more relaxing than admiring beautiful natural views whilst the steam caresses your skin and you sweat out the day's worries.

*What a way to live!*

The scenic sauna can accommodate 8–10 people. The sauna heater is positioned in the heart of the sauna, to ensure an even and enjoyable steam for all.





# Shelters 6,9 & 12,0



## For those at home in nature

**I**n Timapuu shelters you can grill safely and freely in the heart of nature. A shelter offers protection and a place to sleep on fishing and hunting trips when the weather takes you by surprise. It also functions excellently as a spot to take a break during outdoor excursions and hikes and as a leisure space for those who love to get back to nature. Our larger 12.0 m<sup>2</sup> shelter is a spacious option for larger groups.

### The basic configuration of a shelter includes:

- frame made of 45 mm timber
- encircling benches
- felt shingle roof
- eaves flashing
- pressure-treated footing





# Tepee 12,0



## Embracing the spirit of a genuine hut

**W**e have intertwined the traditional hut with some modern day touches. In our tepees you can enjoy a genuine hut experience, taking you back to a time when we lived on nature's terms. The steep roof of the hut ensures a sense of spaciousness as well as good air circulation to vent out smoke. The tepee is a real eye-catcher, both in a courtyard and out in nature, also functioning excellently as a spot to take a break during outdoor excursions and hikes.

### The basic configuration of a tepee includes:

- frame made of 70 mm timber
- encircling benches (70 cm depth on the three back walls)
- mortise door lock
- deadwood door handles
- felt shingle roof and eaves flashing
- pressure-treated footing
- one thermally insulated skylight, which allows the interior to be lit naturally and beautifully (more skylights can be added for an additional fee).





# Accessory Packages

## Polar Grills:

- S8 Ø 600 mm. height 560 mm
- M8 Ø 700 mm. height 560 mm
- L8 Ø 910 mm. height 670/850 mm
- XL10 Ø 1220 mm. height 740 mm

All Polar Grill models are available with or without hood & chimney set. The set includes a damper.

Polar barbecue grills come with the following as standard: adjustable/rotating cooking grid that can also be used for blazing (two in model XL10, one in others), coffee pot hook, 8 detachable table surfaces (depth 30 cm) that can also be used as lap trays, ash pan, cast-iron grate, adjustable air vent and sparks protecting net.

The colour options of the hood & chimney are: black, antique silver and antique copper.



## Carelia Grills:

- Carelia K9-100, Ø 1000, height 600 mm
- Carelia K9 Premium Ø 800, height 600 mm
- Carelia K9 Premium Ø 1000, height 600 mm

All grills include a hood & chimney set with a damper, thimble and rain cap. The grills are black.

Carelia barbecue grills come with the following as standard: 2 large cooking surfaces\*, coffee pot hook, 2 blazing boards, cast-iron pan, 38 cm cooking grid, coal hook, grate, ash pan, base front panel, 8 detachable table surfaces (depth 30 cm) that can also be used as lap trays.

*\*In the K9-100 model, the grilling platforms are height-adjustable with a socket attachment. In the Premium models, the grilling platforms are removable, the support pipes are made of stainless steel, and the lifting mechanism offers stepless adjustment.*



## Apetit Grills:

- Grill surface Ø 550 mm, stone table Ø 1200 mm, height 710 mm
- Grill surface Ø 550 mm, stone table Ø 1570 mm, height 710 mm

Both grill models include a hood & chimney set, but are also available without the set. Hood & chimney set is delivered in black color.



## Grill utensil packages:

- **Pieni:** grillsett, pan cake pan Ø 35 cm, coffee pot 1.5 l
- **Iso:** grillsett, pan cake pan Ø 50 cm, coffee pot 3.0 l





## Lapland package

### Available with all models

- juniper serving dish
- 6 juniper mats
- 6 juniper knife and fork sets
- 6 juniper cups
- Sámi knife, filleting knife, fish fillet fork
- juniper salad tongs
- oven glove and pot holder
- leather coffee pouch
- deadwood bottle opener
- coffeepot warmer
- sausage-print cushion
- Leather-bound guest book
- traditional Sámi hat and scarf
- reindeer antler velvet
- deadwood thermometer
- deadwood axe block
- doorbell

If you wish, you can also order beautiful reindeer skins or sheepskins for the benches and floor grates to bring added comfort.

(We reserve the right to make changes to the contents of the Lapland package.)



The hut in the picture also contains the customer's own items.



# Behind the Timapuu-Quality

Timapuu quality comes as the result of careful and well-finished work and the very best materials. Over 20 years of experience and thousands of orders delivered, both in Finland and abroad, have helped us refine our products into the high-quality and practical pieces you see today. Each individual piece is carefully considered to ensure compatibility and the longevity of the hut.



## Finnish design and engineering

Timapuu offers Finnish dependability. All of our products are Finnish in origin, from the wood materials to the sauna heaters and grills, which makes the sourcing of spare parts quick and easy. All of our huts are crafted by hand in Tornio, Finnish Lapland, from pine sourced in Lapland. Our partners are amongst the very best at what they do in Finland, and great care has gone into selecting them. This ensures that you can enjoy your Timapuu hut for many years to come.

## Only the very best materials

Timapuu huts are constructed from densely grained, 45 mm thick planned timber. If you wish, you can also choose to have your hut made of even thicker 70 mm planed timber or half round timber. The densely grained nature of the Lapland pine we use helps it withstand all kinds of weather – growing in tough conditions means the trees grow slowly and their wood becomes more compact, leading to minimal cracking and wear. This means that your Timapuu hut will remain in good shape, withstand use, and serve you well for years to come – perhaps even for the rest of your life.

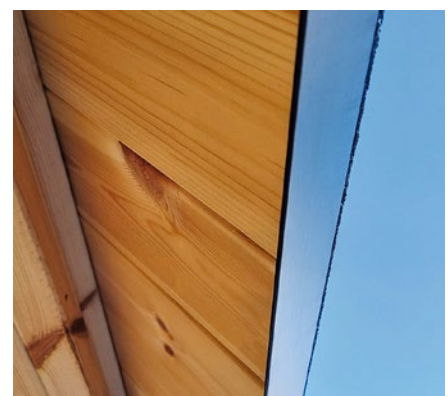
## Installation always included in the price

Helpful and personal service is an important element of Timapuu quality. We want you to be able to enjoy your new outdoor structure as quickly and easily as possible, and we provide reliable transportation to the site with our own vehicles. We install our huts on a ready to use, turnkey basis, and our experienced installation team will make sure that our products have not been damaged in transportation and install them as intended. All you need to do is provide the foundations. This careful work will provide you with a hut that lasts for decades.

## Carefully considered structural solutions

All Timapuu huts are octagonal, except for our largest model, which is 10-sided. The number of corners ensures that the huts feel spacious for their size, and that the space can be put to better use for a wide range of activities.

The roof and walls are constructed specifically to keep moisture out. We build our roofs with vertical boarding and no tongue and groove joints. This means that the moisture does not get trapped between the roofing felt and boarding, and can flow and evaporate away instead. We always finish our eaves properly with drip moulding, which keeps the eaves boards dry. The timber we use for our walls features durable and supportive tongue and groove joints, which increases the lifespan of the hut.





## Flue-free smoke venting

That our 6,9 and 9,9 huts do not require flues to vent out smoke is a source of amazement for many. A steep roof and appropriate dimensions mean that smoke can be vented out without a chimney and hood. This means that the huts feel more spacious with no obstacles blocking the views of the users. Cooking is also a more pleasant experience without a hood above the grill. If desired, the chimney and hood are of course available for these models, too.

## We use Finnish branded products

Timapuu's high quality is complemented by Finnish branded products. We have taken great care in selecting our partners, ensuring that you will benefit from robust complete solutions that work like a dream.

## Barbecue grills

The basic models in our Barbecue Packages are made in Finland. Contact us to find out more about the options available. For more information on our Barbecue Packages, see page 16.

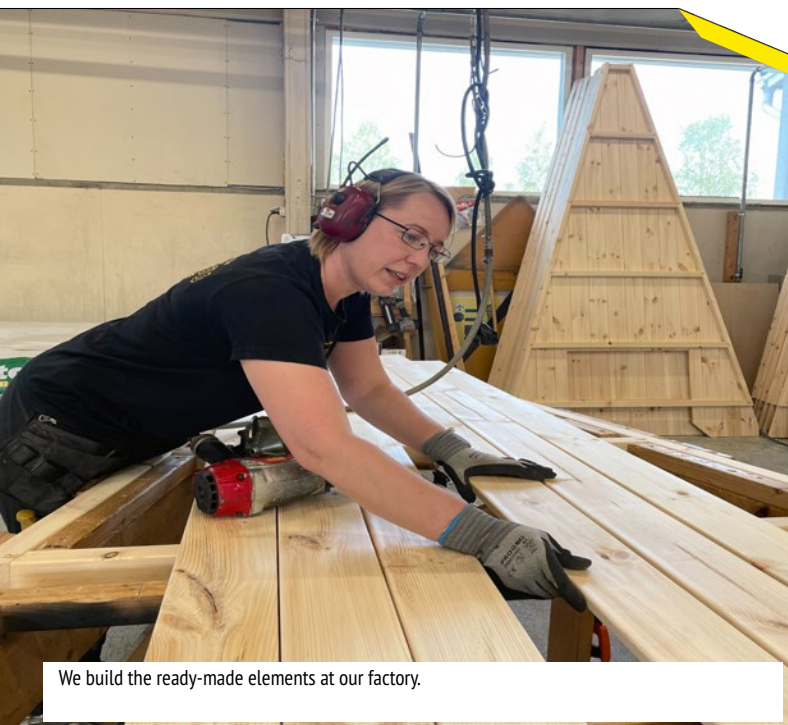
## Sauna heaters

The standard model used in our saunas is a massive Harvia Legend 240 -sauna heater with 25 liters Legend Black -water heater. Also other wood and electricity using heaters are available as options. Ask about options.

## Roofing felt

Timapuu's huts have Finnish felt shingle roofing as standard. Contact us for more information about colours.

**Package contents may change. Please check the package contents with your retailer before buying.**



We build the ready-made elements at our factory.



The products are always delivered by using our own transport fleet, ensuring both reliable scheduling and safe delivery.



With a solid foundation, our experienced team can assemble the barbecue hut quickly and efficiently. When the entire production chain – from raw material to handing over the keys – is handled professionally, you can trust that the hut will serve you well for many years to come.





# Creating good foundations

When you buy a Timapuu hut, all you need to do is provide the foundations. Good foundations guarantee a long and problem-free service life. Good instructions and a precise approach ensure that even an inexperienced builder can successfully lay the foundations. The aim is to achieve a smooth, level and solid base, and you should consider any special requirements that your site has.

## Site selection

Make sure the site for the future hut is stable and free from subsidence. If necessary, remove humus-rich and frost-susceptible soil such as topsoil and clay from the foundation area. It's also important to prevent moisture from rising into the structure through capillary action. This can be achieved by placing a 20 cm layer of crushed stone (gravel) under the foundation. If using a concrete foundation, a layer of insulation board beneath it is recommended, as it also acts as a capillary break. If the foundation is built on piles, no capillary barrier is needed. However, it is advisable to remove grass from the area where the building will stand.

## Choosing a Foundation Type

Options include concrete, lightweight, or wooden foundations. The choice is largely a matter of preference, but it's also important to consider any specific requirements that the building site may impose. For example, a wooden foundation is often the best option when the site is difficult to access, such as on an island that can only be reached by boat.

We're happy to help you find the right foundation solution. We also sell ready-made wooden foundations, complete with installation instructions.

## Ventilation pipe

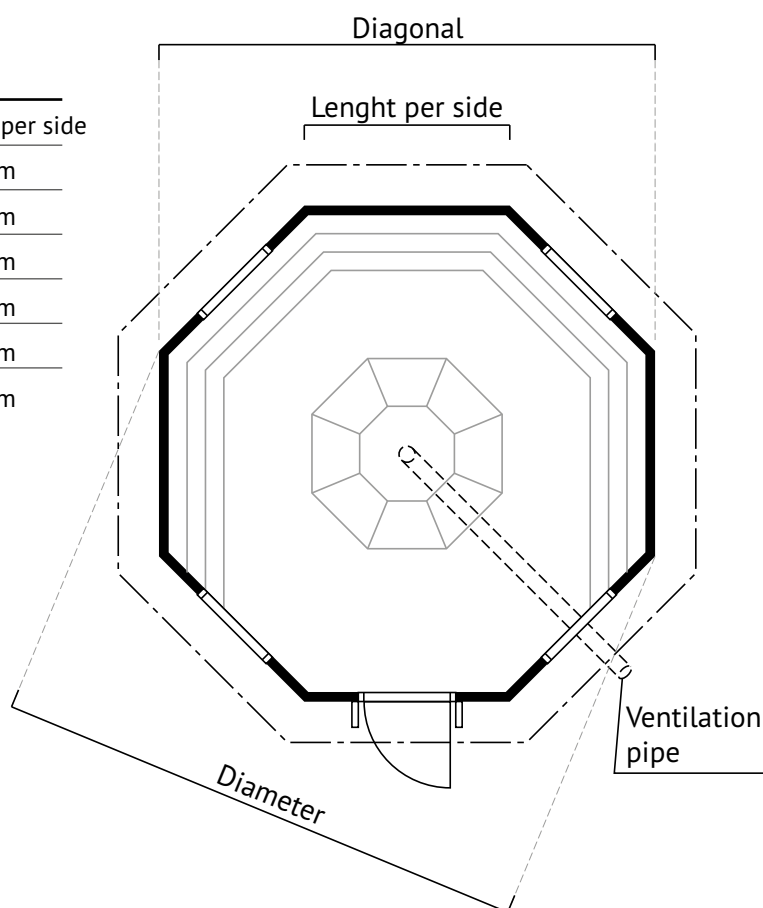
In any hut where a fire is used, a supply of fresh air is essential. That's why a sufficiently large air supply pipe must always be installed into the foundation. One end of the pipe should reach the center of the hut, underneath the grill, while the other end must open outside, below the foundation.

The correct pipe diameter depends on the size of the hut. The minimum diameter is 200 mm. For larger huts, multiple pipes may be needed to ensure adequate airflow. In saunas, a smaller pipe is usually sufficient – for example, a 110 mm or 160 mm pipe placed behind the stove to provide combustion air. It's also recommended to install a drain in the sauna for wash water.

## Dimensions of our hut products

Product	Diameter	Diagonal	Length per side
Size 6.9m <sup>2</sup>	3149mm	2909mm	1205mm
Size 9.9m <sup>2</sup>	3750mm	3464mm	1435mm
Size 12.0m <sup>2</sup>	4142mm	3827mm	1585mm
Size 17.2m <sup>2</sup>	5017mm	4635mm	1920mm
Size 17.5m <sup>2</sup>	5071mm	4685mm	1941mm
Size 29.0m <sup>2</sup>	6233mm	5928mm	1926mm

NB! Make sure to check the measurements before laying your foundations.







  
What kind of  
hut are you  
dreaming of?







French Audi's happening in Sweden

**TIMAPUU**  
Our huts  
Worldwide



Yeoju, Gyeonggi  
South-Korea



Le Fromage Chaud  
France



Fosselv Camping  
Storslett, Norway





Tromsø  
Norway



Cheorwan-Gun, Gangwan  
South-Korea





Timapuu Oy Marttila has been manufacturing high-quality hut products since 1995. Our factory is located in Tornio, Finnish Lapland, and we employ approximately 15 people. Over the years, we have delivered thousands of huts around the world, to destinations in the likes of Europe, Asia, and North and South America.

Get in touch and let's start designing your dream hut package!

### Direct sales from our factory to all of Finland

Timapuu Oy Marttila, Verkkotehtaankatu 12

FIN-95420 TORNIO

[www.timapuu.fi](http://www.timapuu.fi)

**Timo Marttila**, +358 400 698 198, [timo.marttila@timapuu.fi](mailto:timo.marttila@timapuu.fi)

[info@timapuu.fi](mailto:info@timapuu.fi)



# TIMAPUU

